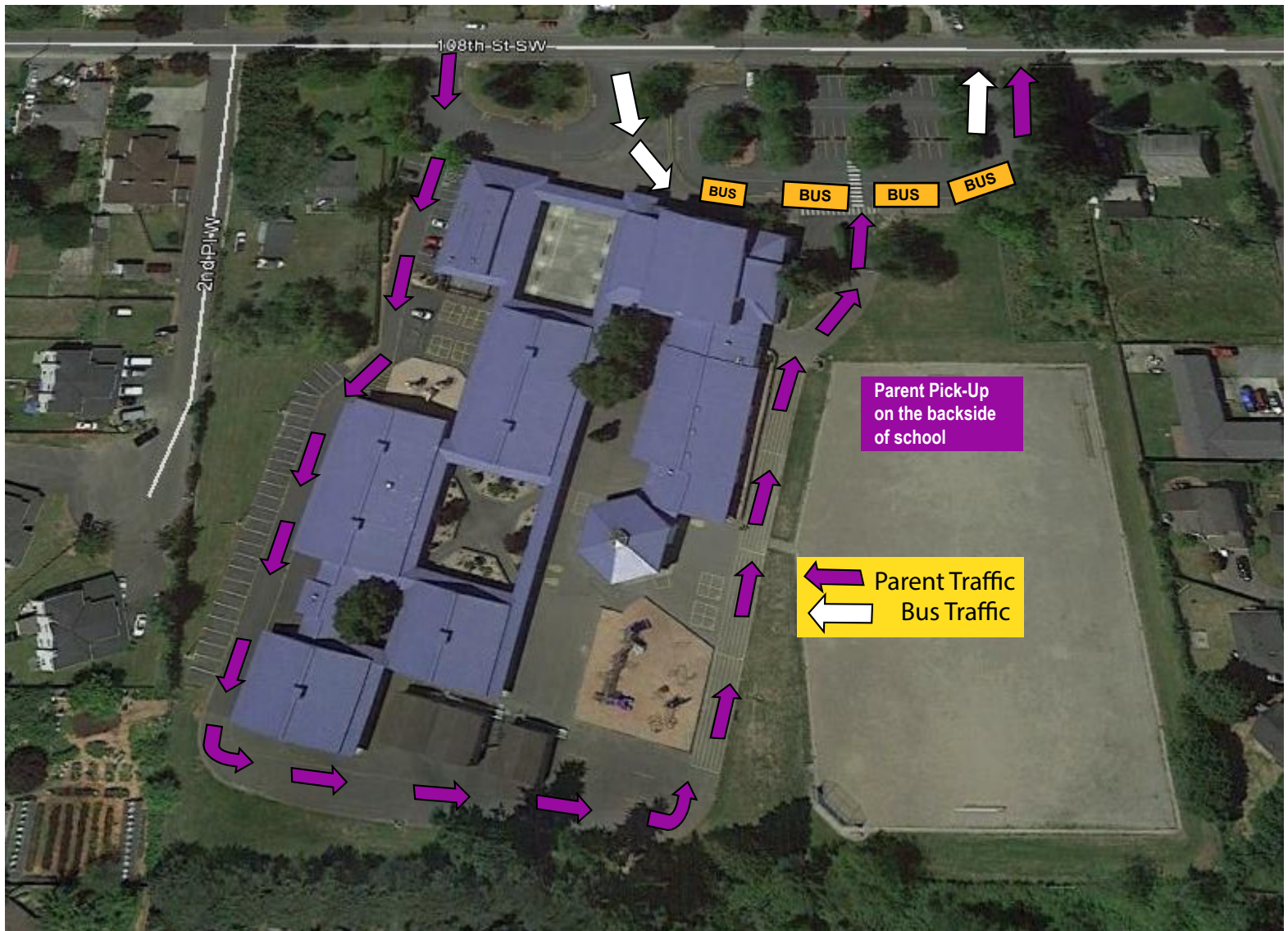


OP BUS LOAD ZONE



CAUTION: BE AWARE OF THE PARENTS AND STUDENTS WHO WALK TO/FROM SCHOOL ALONG 108TH ST SW

BUS ENTRY AND PARENT CAR ENTRY WILL BE DIFFERENT ENTRANCES. WHEN EXITING THEY WILL USE THE SAME LOCATION. WHEN THE BUSES ARE READY TO LEAVE PARENT PICK/DROP OFF LINE WILL BE HELD BY SCHOOL STAFF MEMBER UNTIL BUSES CLEAR THE LOAD ZONE.

STUDENTS WILL LINE UP BEHIND GATE IN THE COURTYARD, NEAR THE MAIN OFFICE AND DRIVERS WILL NEED TO SECURE THEIR BUS PICK UP THEIR STUDENTS FROM THE LINE AND WALK THEM BACK TO THE BUS.

SMALL BUSES WILL COME IN LATER THAN BIG BUSES AND PARK AT THE BACK OF THE LOOP